

Harbin Rainbow Technology Co., Ltd. 中国黑龙江省哈尔滨市
WUXI 无锡

30 年 专业生产 各种规格 螺母 生产效率高 节能环保

产品广泛应用于 机械制造 汽车工业 航空航天 船舶工业 等领域

公司 秉承 “质量第一 服务至上” 的经营理念 为客户提供 优质的产品和服务 赢得了 广大客户的 支持和信赖



NUT MAKER

Nuts making machine is mainly used for making all kinds of standard and non-standard nuts. It can finish the products in one time with advantages of energy saving, high productivity and easy use.



- Professional
- Good quality
- Energy conservation

20 YEARS

20 years of professional export

PRODUCTION AREA

Provide You With A Variety Of Products Meet
The Different Needs Of Customers

Extra thick nut, flanged nut, motorcycle link pin, oil plug screw, hex socket lockup nut, square nut, weld nut, cap nut, blind nut, chain roller, expansion anchor, bicycle and motorcycle shaped spare parts, and so on.





Safety-oriented
production



Zero Quality
Inspection

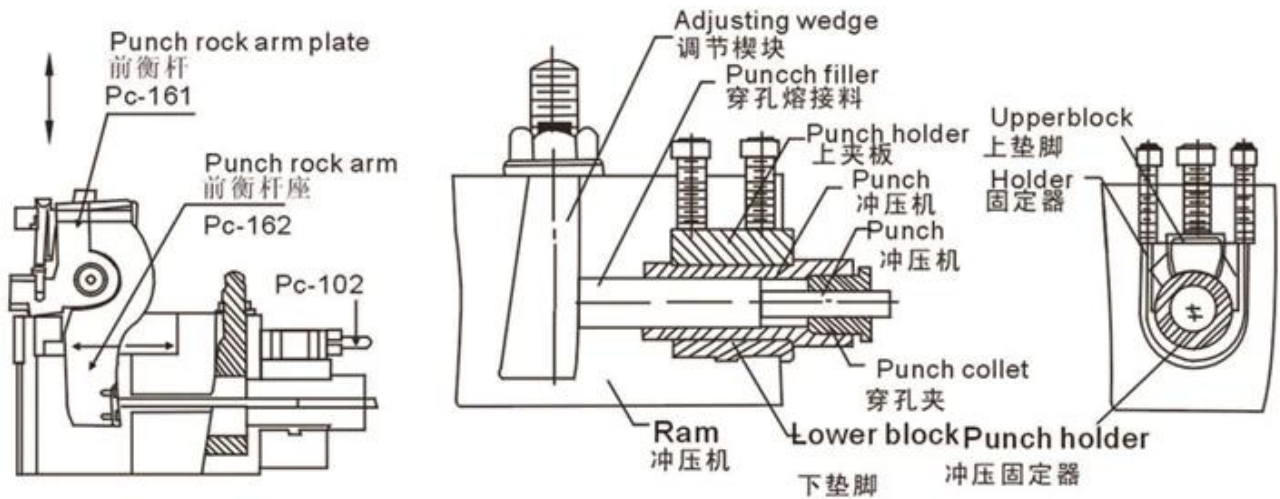


Pre-sale Design
Customization

DETAILS SHOW

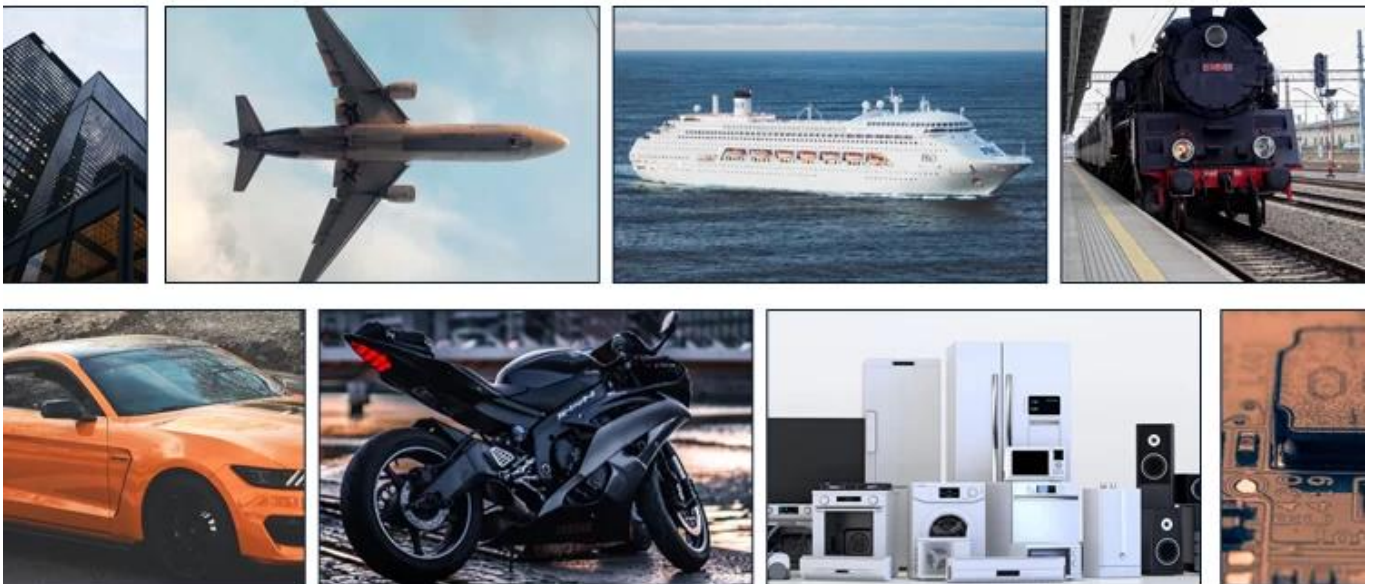
High quality internal mix to improve
your productivity





FIELD OF PRODUCTION APPLICATION

Thanks to the advantage of the cold upsetting equipment itself and the superiority of cold upsetting technique, the formers also are widely used in different national economic territories for producing fasteners and abnormal non-standard parts such as aviation steamer, machinery , rail traffic, vehicle, motorcycle, bicycle, architecture, electric appliance electronic and communication products, etc.



| MODEL | FORGING STATION | MAX. FORGING DIA.(mm) | CUT-OFF DIA.(mm) | PRODUCT SIZE | FORGING LENGTH (mm) | DIE PITCH (mm) | SLIDER STROKE (mm) | OUTPUT (per.min.) | MAIN MOTOR (HP) | WEIGHT (T) | DIMENSION (cm) |
|----------------|-----------------|-----------------------|------------------|--------------|---------------------|----------------|--------------------|-------------------|-----------------|------------|----------------|
| RNF08B-6S-12 | 6 | 8 | 8 | M4-M5 | 12 | 38 | 40 | 175/350 | 10 | 3.5 | 195×135×130 |
| RNF11B-6S-14 | 6 | 11 | 10 | M5-M6 | 14 | 50 | 60 | 120/240 | 15 | 4.3 | 230×155×135 |
| RNF11B-6SL-20 | 6 | 11 | 10 | M5-M6 | 20 | 50 | 65 | 110/200 | 20 | 4.5 | 230×155×135 |
| RNF11B-6SL-35 | 6 | 11 | 10 | M5-M6 | 35 | 50 | 125 | 110 | 20 | 4.5 | 230×155×135 |
| RNF14B-6S-18 | 6 | 15 | 14 | M6-M8 | 18 | 60 | 70 | 75/160 | 20 | 8 | 300×195×175 |
| RNF14B-6SL-30 | 6 | 15 | 14 | M6-M8 | 30 | 60 | 100 | 85/160 | 30 | 8 | 300×198×175 |
| RNF14B-6SL-50 | 6 | 15 | 14 | M6-M8 | 50 | 60 | 160 | 85 | 30 | 8.5 | 300×198×175 |
| RNF17B-6S-20 | 6 | 17 | 17 | M8-M10 | 20 | 70 | 80 | 65/130 | 20 | 10 | 350×220×185 |
| RNF17B-6SL-50 | 6 | 17 | 17 | M8-M10 | 50 | 70 | 160 | 80 | 40 | 10.5 | 360×220×185 |
| RNF17B-6SL-70 | 6 | 17 | 17 | M8-M10 | 70 | 70 | 220 | 80 | 50 | 10.5 | 360×220×185 |
| RNF19B-6S-25 | 6 | 20 | 19 | M10-M12 | 25 | 80 | 95 | 95 | 40 | 10.5 | 360×220×185 |
| RNF19B-6SL-50 | 6 | 20 | 19 | M10-M12 | 50 | 80 | 160 | 75 | 50 | 16 | 380×245×196 |
| RNF19B-6SL-70 | 6 | 20 | 19 | M10-M12 | 70 | 80 | 220 | 65 | 60 | 16 | 380×235×196 |
| RNF22B-6S-30 | 6 | 22 | 22 | M12-M14 | 30 | 80 | 160 | 80 | 60 | 18 | 380×235×196 |
| RNF22B-6SL-60 | 6 | 22 | 22 | M12-M14 | 60 | 80 | 220 | 75 | 60 | 18 | 380×235×196 |
| RNF24B-6S-35 | 6 | 24 | 24 | M14-M16 | 35 | 100 | 160 | 75 | 75 | 27.5 | 550×248×270 |
| RNF24B-6SL-70 | 6 | 24 | 24 | M14-M16 | 70 | 100 | 210 | 65 | 75 | 27.5 | 550×248×270 |
| RNF27B-6S-40 | 6 | 27 | 29 | M16-M18 | 35 | 100 | 160 | 75 | 100 | 30 | 550×248×270 |
| RNF27B-6SL-70 | 6 | 27 | 29 | M16-M18 | 70 | 100 | 210 | 65 | 150 | 30 | 550×248×270 |
| RNF30B-6S-40 | 6 | 30 | 28 | M16-M20 | 40 | 120 | 150 | 60-90 | 100 | 40 | 550×280×200 |
| RNF30B-6SL-80 | 6 | 32 | 28 | M16-M20 | 80 | 120 | 200 | 50-65 | 125 | 45 | 650×280×200 |
| RNF33B-6S-40 | 6 | 33 | 30 | M18-M22 | 40 | 140 | 150 | 60-80 | 125 | 55 | 600×300×200 |
| RNF33B-6SL-80 | 6 | 33 | 30 | M18-M20 | 80 | 140 | 280 | 60 | 200 | 50 | 650×300×280 |
| RNF36B-6S-45 | 6 | 35 | 32 | M18-M24 | 45 | 150 | 160 | 60-80 | 125 | 60 | 650×300×200 |
| RNF36B-6SL-100 | 6 | 35 | 32 | M18-M24 | 100 | 150 | 260 | 50-60 | 150 | 70 | 750×300×200 |
| RNF41B-6S-50 | 6 | 40 | 40 | M20-M27 | 50 | 165 | 200 | 55-70 | 150 | 68 | 700×350×240 |
| RNF41B-6SL-100 | 6 | 40 | 40 | M20-M27 | 100 | 165 | 260 | 50-60 | 200 | 80 | 750×350×280 |
| RNF45B-6S-55 | 6 | 45 | 42 | M20-M30 | 50 | 180 | 210 | 50-60 | 180 | 85 | 750×300×280 |
| RNF45B-6SL-100 | 6 | 45 | 42 | M20-M30 | 100 | 180 | 260 | 50-60 | 270 | 100 | 800×350×300 |

All specifications are subject to changes without prior notice