



AUTOMATIC 2/4 SPINDLE NUT TAPPING MACHINE

Automatic 2/4 spindle nut tapping machine
Fast positioning, efficient cutting, large machining area,
low working cost



- Professional
- Good quality
- Energy conservation

20 YEARS

20 years of professional export

Overview

Quick Details

| | | | |
|-----------------------|---|-----------------------|---------------------|
| Condition: | New | Place of Origin: | Jiangsu, China |
| Usage: | Heat Treatment Furnace | Type: | Resistance Furnace |
| Brand Name: | Rainbow | Voltage: | 380V,415V |
| Dimension(L*W*H): | 50m | Certification: | CE Certificate |
| Weight (T): | 65 T | Power (kW): | 190 |
| After Warranty Ser... | Video technical support, Online support | Key Selling Points: | Competitive Price |
| Local Service Loc... | India | Applicable Industr... | Manufacturing Plant |
| Showroom Locati... | India | Weight: | 63900kgs |
| After-sales Servic... | Engineers available to service machinery overseas | furnace: | mesh belt furnace |
| Warranty: | 1 year | | |

Supply Ability

Supply Ability: 20 Unit/Units per Year

Packaging & Delivery

Packaging Details In Containers,40 feet container, 20 feet container.
Port Shanghai

PRODUCT ACCESSORIES

Replaceable parts to ensure a longer product life

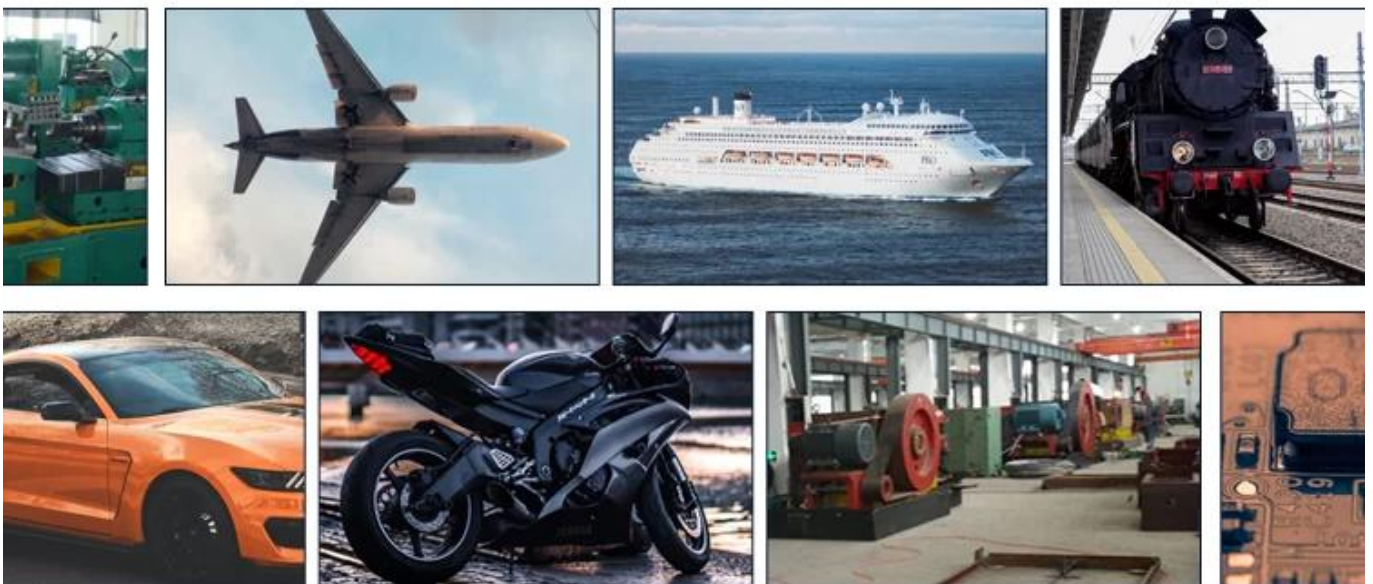


THREE ADVANTAGES

1. Fast positioning, efficient cutting, large machining area and low working cost;
- 2, torque protection, high screw precision, through hole or blind hole to ensure constant tap;
- 3, strong torque output, no experience and strength can be skilled operation;

FIELD OF PRODUCTION APPLICATION

Tapping machine is applicable to all machinery manufacturing industries, machine tools, molds (factories) machinery, plastic machinery, printing machinery, packaging machinery manufacturers, construction machinery, automobile and motorcycle parts, aircraft engines, rolling stock, tobacco machinery and machinery industries,



PRODUCT DISPLAY



SPECIFIC PARAMETERS

| Model | Size | No. of Spindle | Main Motor (kw) | | Main Motor (kw) | Motor of Material Mixing (kw) | Oil Pump (kw) | Air Pressure (kg/cm) | Dimension (L x W x H/mm) | Weight (kg) |
|-----------|------|----------------|-----------------|-----|-----------------|-------------------------------|---------------|----------------------|--------------------------|-------------|
| | | | Flange | Hex | | | | | | |
| LDH-M4-2 | M3 | 2 | 80 | 100 | 0.75-4 | 0.55 | 0.125 | 1.5-2.5 | 1100x1100x1800 | 450 |
| | M4 | 2 | 80 | 100 | | | | | | |
| LDH-M8-2 | M5 | 2 | 70 | 100 | 0.75-4 | 0.55 | 0.125 | 2-3 | 1100x1100x1800 | 450 |
| | M6 | 2 | 65 | 90 | | | | | | 500 |
| | M8 | 2 | 60 | 80 | | | | | | |
| LDH-M12-2 | M10 | 2 | 50 | 70 | 1.5-4 | 0.55 | 0.125 | 3-4 | 1100x1100x1800 | 500 |
| | M12 | 2 | 45 | 60 | | | | | | |
| LDH-M16-2 | M14 | 2 | 40 | 50 | 2.2-6 | 0.55 | 0.125 | 3-5 | 1100x1100x1800 | 550 |
| | M16 | 2 | 30 | 40 | | | | | | |

| Model | Size | No. of Spindle | Main Motor (kw) | | Main Motor (kw) | Motor of Material Mixing (kw) | Oil Pump (kw) | Air Pressure (kg/cm) | Dimension (L x W x H/mm) | Weight (kg) |
|-----------|------|----------------|-----------------|-----|-----------------|-------------------------------|---------------|----------------------|--------------------------|-------------|
| | | | Flange | Hex | | | | | | |
| LDH-M 8-4 | M5 | 4 | 140 | 200 | 0.75-4 | 0.55 | 0.25 | 2-3 | 1450x1600x1800 | 1110 |
| | M6 | 4 | 130 | 180 | | | | | | |
| | M8 | 4 | 120 | 160 | | | | | | |
| LDH-M12-4 | M10 | 4 | 100 | 140 | 1.5-4 | 0.55 | 0.25 | 3-4 | 1500x1900x1750 | 1160 |
| | M12 | 4 | 90 | 120 | | | | | | |
| | M14 | 4 | 80 | 100 | | | | | | |
| LDH-M18-4 | M16 | 4 | 60 | 80 | 2.2-6 | 0.75 | 0.25 | 4-5 | 1700x2000x1800 | 1280 |
| | M18 | 4 | 50 | 70 | | | | | | |
| LDH-M24-4 | M20 | 4 | 40 | 60 | 2.2-8 | 1.1 | 0.25 | 4-6 | 1750x2100x1850 | 1400 |
| | M22 | 4 | 30 | 50 | | | | | | |
| | M24 | 4 | 25 | 40 | | | | | | |
| LDH-M30-4 | M27 | 4 | 20 | 32 | 3-8 | 1.1 | 0.25 | 4-7 | 1750x2100x1850 | 1400 |
| | M30 | 4 | 16 | 28 | | | | | | |



COMPANY PROFILE

Harbin Rainbow Technology Co.,Ltd comes from China National Machinery Import and Export Corp. Harbin branch. The main business is manufacturing cold forging machine, Bolt Maker, Nut Maker, Part Former, Screw Heading Machine, Thread Rolling Machine, Wire Drawing Machine and Mesh Belt Furnace,Zinc plating plant. etc.



We abide by the principles of honesty, credibility, and mutual-benefit, and do our best to serve clients and customers both at home and abroad. With our top-notch professional knowledge and trading experience, we have seen our market development ability and actual business growth with an increasingly faster pace. We sincerely look forward to working with you to facility your company's foreign market development and China market expansion. Let's build a great future together!





MUMBAI EXHIBITION IN 2019

