

RAINBOW

CONTINUOUS MESH BELT (CARBURIZING) FURNACE LINE

The computerizing office management can be realized with computer control system.



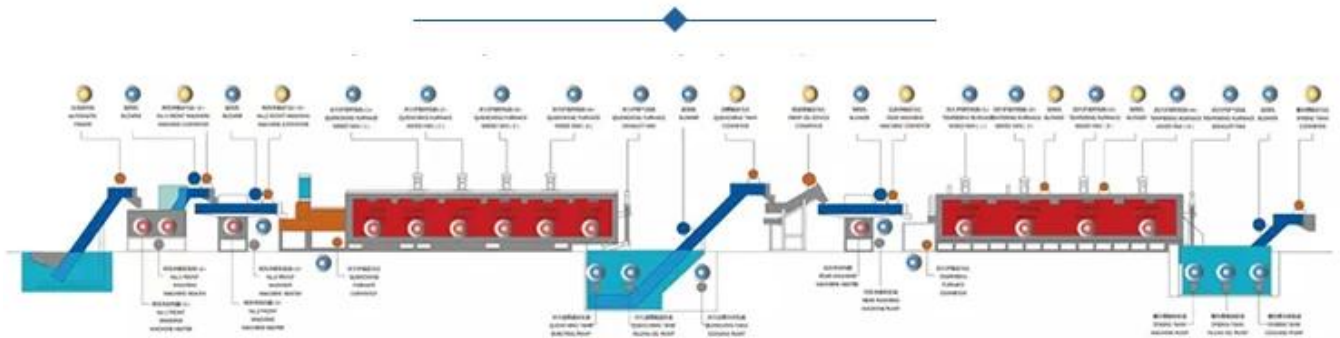
- Professional ✓
- Good quality ✓
- Energy conservation ✓

20 YEARS

20 years of professional export



THE CONTINUOUS MESH BELT (CARBURIZING) FURNACE LINE RUNNING SIGN LAMP

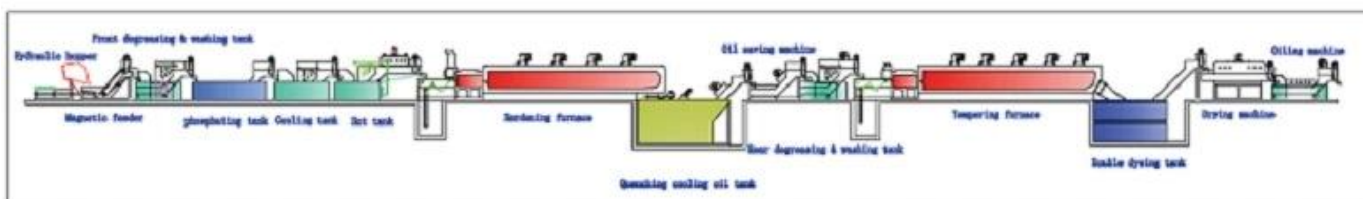


MAIN SPARES

Some parts can be replaced to extend the service life of the machine.



Uses: Widely used in auto parts, fasteners, chains, bearings and machine parts
Tools. Automatic loading of continuous heat treatment operations, carbonitriding, Quenching, washing, tempering, Dyeing and covering oil and other computerized office management
With computer control system to achieve.



Continuous mesh belt conveyor and heat treatment furnace gas control

model	Power (KW)	Total power (KW)	Working Temperature (°C)	Working Size (mm)	Capacity (KGS / H)
WZTG9-30 * 600 * 10	#1	90	950	300 * 100 * 6000	120-150
WZTG9-40 * 600 * 10	#2	120	950	400 * 100 * 6000	180-220
WZTG9-50 * 600 * 10	# 3	180	950	6000 * 500 * 100	250-300
WZTG9-60 * 600 * 10	# 4-1	220	950	600 * 100 * 6000	400-450
WZTG9-60 * 800 * 10	# 4-2	275	950	600 * 100 * 8000	450-500
WZTG9-80 * 600 * 10	# 5-1	275	950	800 * 100 * 6000	450-500
WZTG9-80 * 800 * 10	# 5-2	360	950	800 * 100 * 8000	650-750
WZTG9-80 * 1000 * 10	# 6	410	950	10000 * 800 * 100	900-1000
WZTG9-100 * 1000 * 10	# 7	500	950	1000 * 100 * 10000	1200-1300
WZTG9-120 * 1000 * 10	#8	600	950	1200 * 100 * 10000	1400-1500
WZTG9-120 * 1350 * 10	#9	950	950	1200 * 13,500 * 100	1800-2000

* Size and amplifier; specifications can be customized MADE

Magnetic feeder:



Dephosphorization TANK:



Quenching oil TANK:

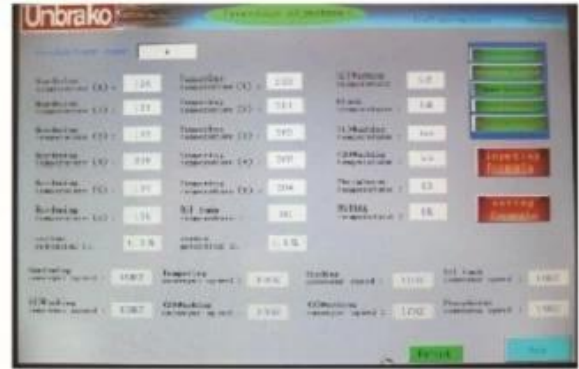


DOUBLE vat:



spare parts:

Men-Machine Interface Intelligence Control System



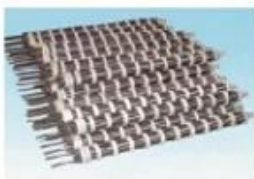
Carbon Controller



Zirconia carbon sensor



SPARE PARTS:



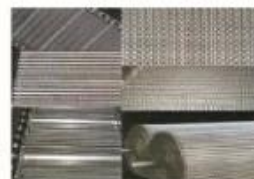
HEATING ELEMENT



RADIANT TUBE



THERMOCOUPLE



MESH-BELT



ROLLER

SHIPPING furnace production line consists of:

