

## Product Description

**RAINBOW**

# CONTINUOUS MESH BELT ( CARBURIZING ) FURNACE LINE

The computerizing office management can be realized with computer control system.

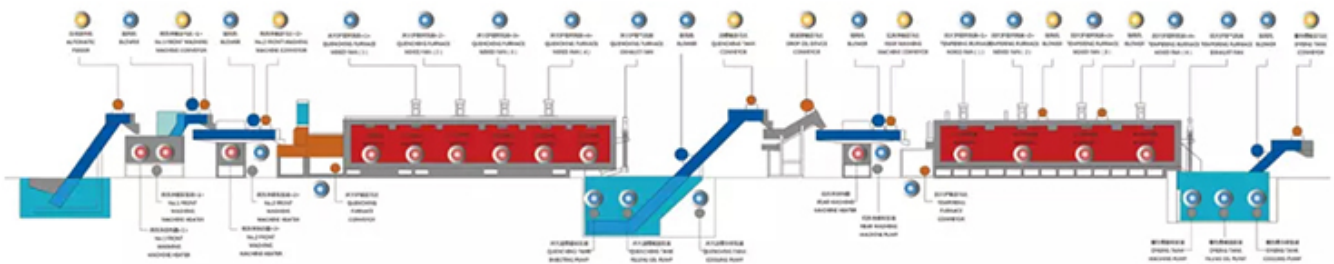


- Professional ✓
- Good quality ✓
- Energy conservation ✓

**20** YEARS

20 years of professional export

# THE CONTINUOUS MESH BELT (CARBURIZING) FURNACE LINE RUNNING SIGN LAMP



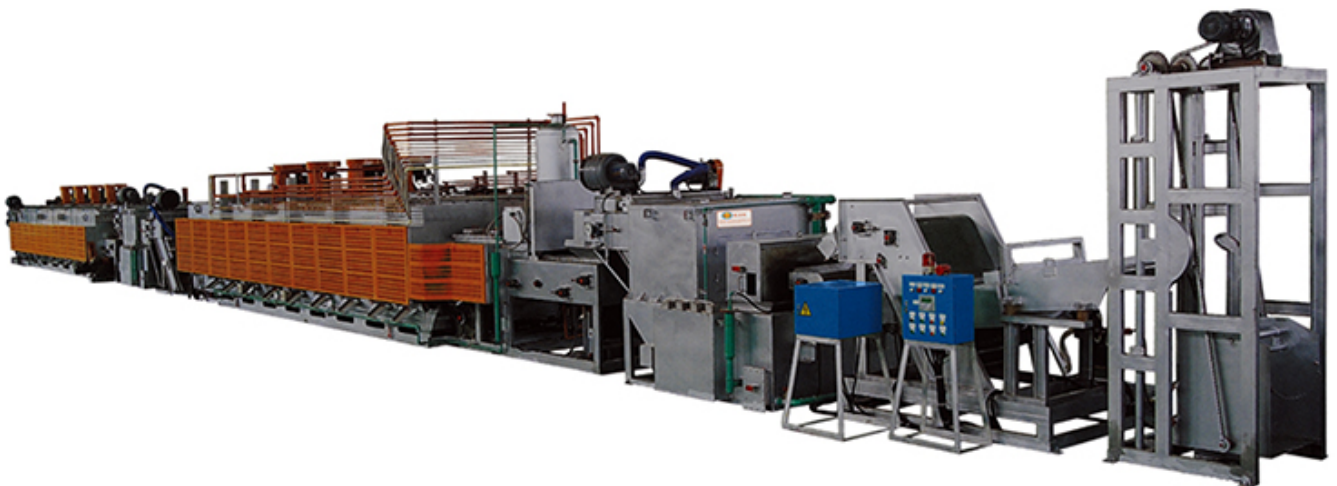
## MAIN FEATURES

Continuous Mesh belt Conveyor and Gas controller Heat-treatment Furnace

1 Less Energy consumption, bigger production

2 More energy saving : gas heating furnace of energy consumption around 45 m<sup>3</sup>/each ton .

3 Longer equipment service life : Roller space step is 225mm, reducing affordability of each roller; Insulation work, the thickness of the furnace bottom is 240mm.

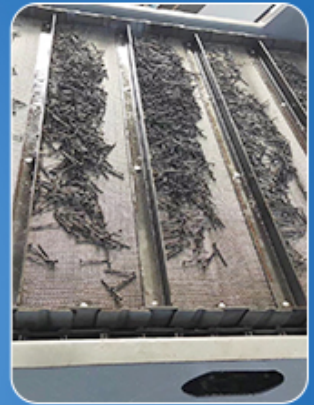




# USE THE APPLICATION

Widely used for the mechanical parts of automobile fittings, fastening, chains, bearings and tools etc.

to realize the continuous heat-treatment operations of automatic loading, carbonitriding, quenching, rinsing, tempering, dyeing and oil-covering etc.



## EQUIPMENT DISPLAY

The production chain composed of multiple machines is convenient for installation and transportation.



MAGNETIC-BELT TYPE FEEDER



PRR-WASHING MACHINE



DYEING TANK



OILING TANK