

Máquina de cabeçalho

Modelo	RSH10-120
Máx.Diâmetro em branco (mm)	10
Máx.Comprimento em branco (mm)	120
Máx.Corte o comprimento (mm)	140
AVC (mm)	150
Saída (PCS/min)	50-60
Diâmetro principal do dado (mm)	Φ80x160
Diâmetro da matriz Punch (1º) (mm)	Φ55x150
Diâmetro da matriz Punch (2º) (mm)	Φ55x150
Corte o diâmetro da matriz (mm)	Φ40x50
Tamanho do cortador (mm)	16x55x115
Principal Principal (KW)	15hp/11kw
Tamanho da máquina (L*W*H) (M)	4.80x1.80x1.70
Aprox Weight (kgs)	8450

Para obter mais informações, deixe uma mensagem e posso lhe dar uma introdução detalhada.

A máquina principal é uma máquina profissional de formação de resistência a frio que combina com uma máquina de laminação de arame automática em toda a planta da indústria de fixadores.

Instruções de segurança

A máquina de título processa automaticamente, o fio em produtos semi-acabados.

A máquina pode produzir cabeça de treliça, cabeça de contra -balcão, parafuso de ajuste, parafuso de madeira, parafuso de encaixe, parafuso auto -tocador, cabeça hexadecimal plana, cabeça da panela, cabeça hexagonal, cabeça de soquete, cabeça de botão e assim por diante.



SCREW MAKER

One die two blow heading machine. widely used to produce standard and non-standard screw. the machine is easy to operate and stable in performance



- Professional
- Good quality
- Energy conservation

20 YEARS

20 years of professional export

RAINBOW

HIGH-SPEED AUTOMATIC THREAD ROLLING MACHINE



- Professional ✓
- Good quality ✓
- Energy conservation ✓

20 YEARS

20 years of professional export

PRODUCTION AREA

Provide You With A Variety Of Products Meet
The Different Needs Of Customers



SUPER HIGH QUALITY UNITS



SWING PNEUMATIC GRIPPER



DIGITAL BAFFLING OPERATED BY HAND WHEEL



DIGITAL FEEDING OPERATED BY HAND WHEEL



SLIDING SCREWED SLEEVE OF REAR K.O.



CUT OFF PART



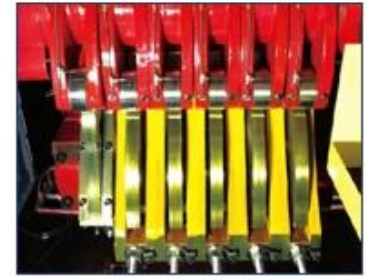
Due to the high accurate multi-function compound gripping mechanism, there are translational wide open gripper, nut gripper and turnover wide open gripper, and these 3 grippers can be interchanged and shared at will. However the key breakthrough design is that the turnover wide open gripper can both turn over and widely open, it expands the production range for different kinds of abnormal parts and reduces the manufacturing cost for the dies.



AIR CLUTCH



OPERATING
SYSTEM



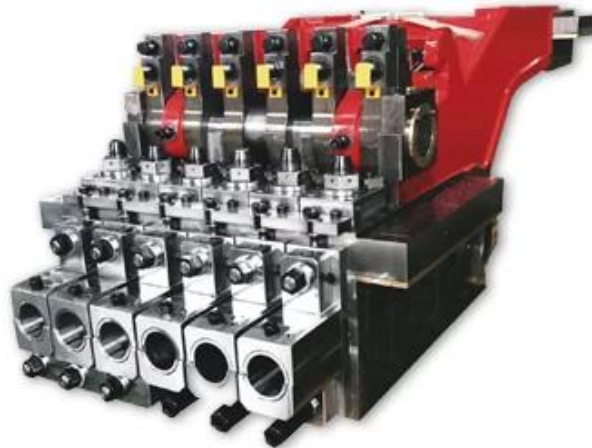
REAR KNOCK
OUT MECHANISM



ELECTRICAL
DIGITAL FEEDING



THE SWING OF
GRIPPER IS DRIVEN
BY CONJUGATE CAM

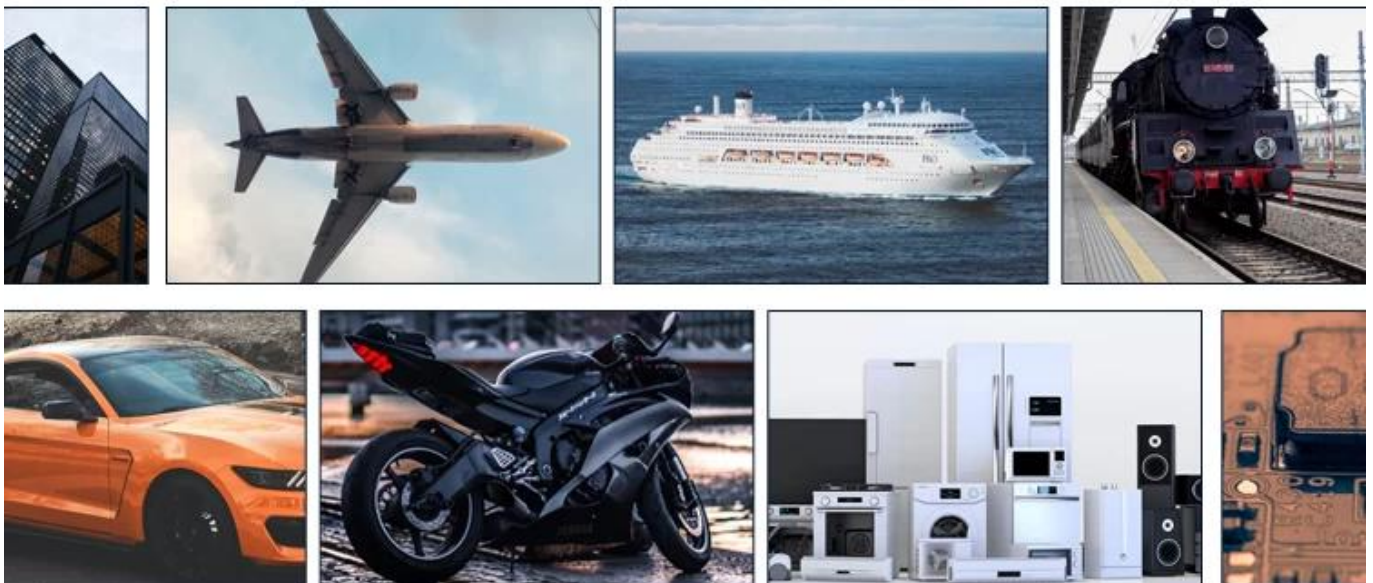


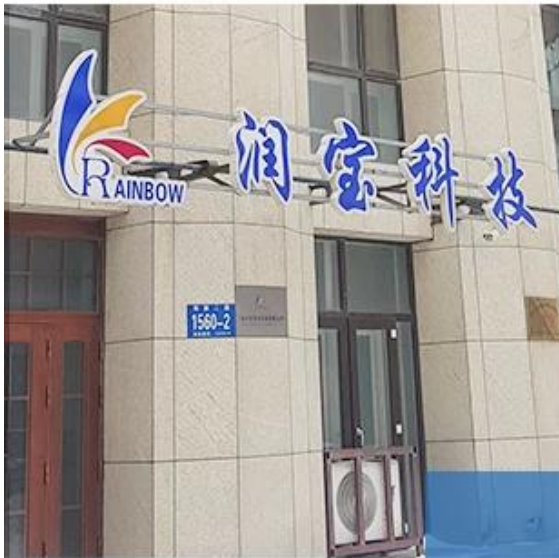
High accuracy main sliding block is designed to be connected with rear wing for letting it run stably and precisely, the bottom of front and back wing is adopted super wearing inserted copper plate with self lubrication, it can ensure accuracy and extend service life. The post stations of punching tool can be fulfilled the function of reverse punching.

FIELD OF PRODUCTION APPLICATION



Thanks to the advantage of the cold upsetting equipment itself and the superiority of cold upsetting technique, the formers also are widely used in different national economic territories for producing fasteners and abnormal non-standard parts such as aviation steamer, machinery , rail traffic, vehicle, motorcycle, bicycle, architecture, electric appliance , electronic and communication products, etc.





COMPANY PROFILE

Harbin Rainbow Technology Co.,Ltd comes from China National Machinery Import and Export Corp. Harbin branch. The main business is manufacturing cold forging machine, Bolt Maker, Nut Maker, Part Former, Screw Heading Machine, Thread Rolling Machine, Wire Drawing Machine and Mesh Belt Furnace, Zinc plating plant. etc.



MUMBAI
EXHIBITION
IN
2019



CoelhoZhang/projetogerente
Telefone/WeChat/WhatsApp: +8615678396701