

Product Description

RAINBOW

CONTINUOUS MESH BELT (CARBURIZING) FURNACE LINE

The computerizing office management can be realized with computer control system.

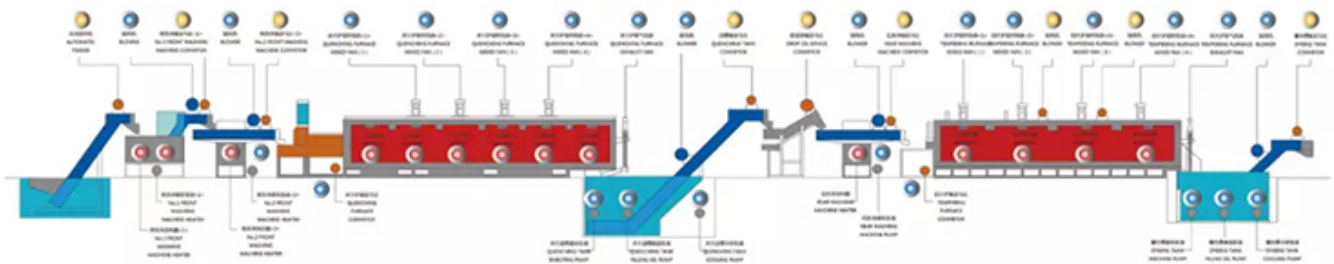


- Professional ✓
- Good quality ✓
- Energy conservation ✓

20 YEARS

20 years of professional export

THE CONTINUOUS MESH BELT (CARBURIZING) FURNACE LINE RUNNING SIGN LAMP



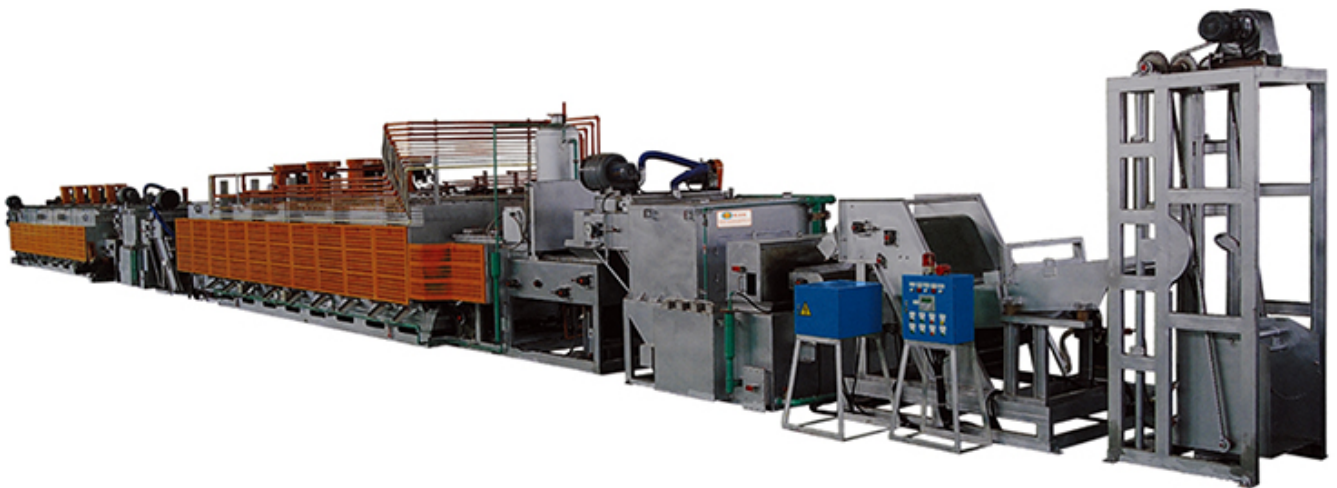
MAIN FEATURES

Continuous Mesh belt Conveyor and Gas controller Heat-treatment Furnace

1 Less Energy consumption, bigger production

2 More energy saving : gas heating furnace of energy consumption around 45 m³/each ton .

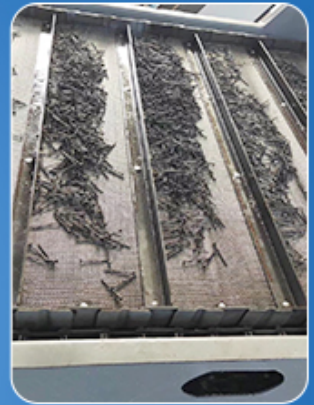
3 Longer equipment service life : Roller space step is 225mm, reducing affordability of each roller; Insulation work, the thickness of the furnace bottom is 240mm.



USE THE APPLICATION

Widely used for the mechanical parts of automobile fittings, fastening, chains, bearings and tools etc.

to realize the continuous heat-treatment operations of automatic loading, carbonitriding, quenching, rinsing, tempering, dyeing and oil-covering etc.



EQUIPMENT DISPLAY

The production chain composed of multiple machines is convenient for installation and transportation.



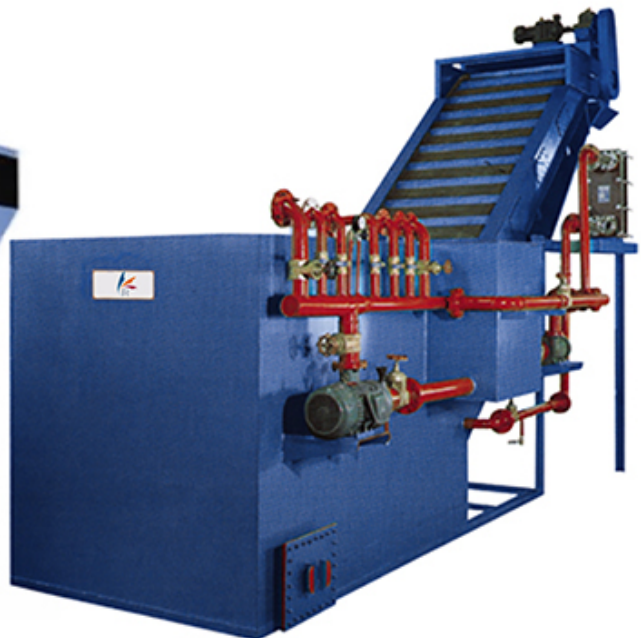
MAGNETIC-BELT TYPE FEEDER



PRR-WASHING MACHINE



DYEING TANK



OILING TANK