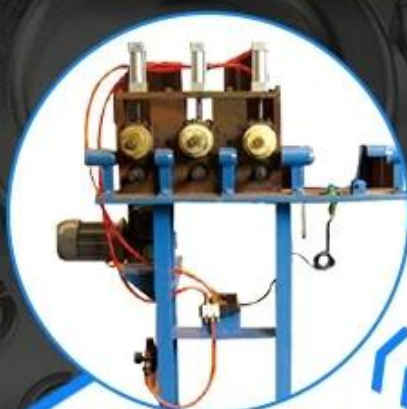


SPRING WASHER MACHINE

Fast speed and high stability. High carbon steel with tensile strength of 1500–1700 can be used as material of spring washer.



Coil collection



Belt wire drawing machine



Cutting machine



Coil machine

- Professional ☒
- Good quality ☒
- Energy conservation ☒

20 YEARS

20 years of professional export

Máy làm máy giặt lò xo tốc độ cao

Chúng tôi có thể cung cấp toàn bộ dòng để làm máy giặt lò xo. Dây chuyên sản xuất lò xo Wahser chứa máy cắt, máy vẽ dây đai, máy cuộn lên, máy thu thập cuộn.

Máy giặt lò xo Nó bao gồm ba phần:

1 bước, vẽ dây tròn vào máy dây đai.

2 bước, cuộn lên máy.

3 bước, máy cắt.

[Tham số kỹ thuật](#)

TECHNICAL SPECIFICATION

Item	Specification	Speed rpm	Dimension(L*W*H) mm	Weight/kg
Belt Wire Drawing Machine	Reel dia.:550			
	Reel dia.:350			
Coil machine	3-5mm(inner dia of final product)	1080	1380*600*950	400
	6mm(inner dia of final product)	1080	1600*650*950	450
	8-10mm(inner dia of final product)	720	1800*750*1350	750
	12-16mm(inner dia of final product)	518	1800*750*1350	1000
	18-22mm(inner dia of final product)	392	2000*1450*900	1200
	24-30mm(inner dia of final product)	262	2200*1000*1500	1600
	Above 33mm(inner dia of final product)	150	2600*1100*1780	2000
Coil collection machine	Below 12mm(inner dia of final product)			
	12-22mm(inner dia of final product)			
Cutting machine	3-5mm(inner dia of final product)	530	850*700*1250	300
	6-8mm(inner dia of final product)	368	1200*750*1350	450
	10-12mm(inner dia of final product)	296	1450*850*1500	600
	14-16mm(inner dia of final product)	213	1550*950*1580	1000
	18-20mm(inner dia of final product)	150	1650*1000*1600	1300
	22-30mm(inner dia of final product)	120	1850*1200*1600	1500
	above33mm(inner dia of final product)	70	2000*1500*2800	3000
Mould(round wire to belt wire) material Cr12Movz	150mm			
	200mm			
	150mm mould sheet			
	200mm mould sheet			

All specifications are subject to changes without prior notice



COMPANY PROFILE

Harbin Rainbow Technology Co.,Ltd comes from China National Machinery Import and Export Corp. Harbin branch. The main business is manufacturing cold forging machine, Bolt Maker, Nut Maker, Part Former, Screw Heading Machine, Thread Rolling Machine, Wire Drawing Machine and Mesh Belt Furnace, Zinc plating plant. etc.



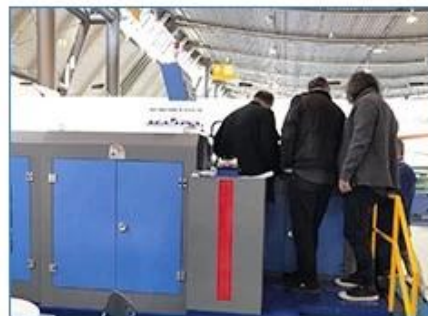
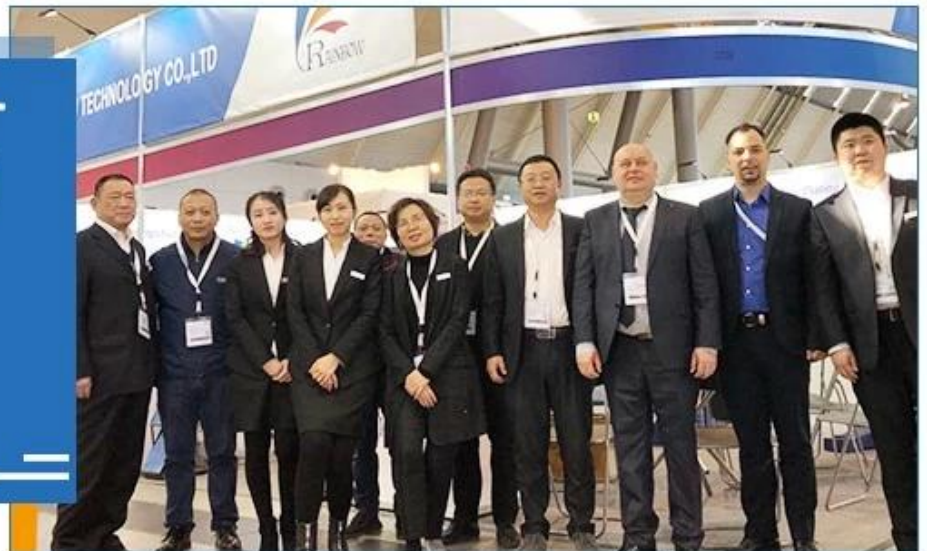
We abide by the principles of honesty, credibility, and mutual-benefit, and do our best to serve clients and customers both at home and abroad. With our top-notch professional knowledge and trading experience, we have seen our market development ability and actual business growth with an increasingly faster pace. We sincerely look forward to working with you to facility your company's foreign market development and China market expansion. Let's build a great future together!



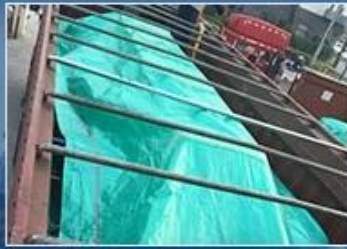
OFFICE IN INDIA



STUTTGART EXHIBITION IN 2019



SHIPPMENT



Bunny Zhang
Sales Manager

Harbin Rainbow Technology Co., Ltd. Ningbo Branch

Add: Beilun District, Ningbo city, China



www.rainbowtechnology.net

www.machine-tools.com.cn

Mobile/Whatsapp/Wechat: +86 15678396701

Email: bunny@rainbowtechnology.net